

PIPING & DRUMMING QUALIFICATIONS BOARD

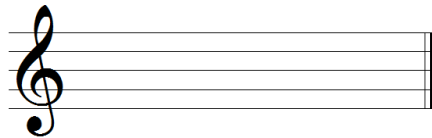
BASS & TENOR DRUM LEVEL 5

Time Allowed — 1 Hour

1 (a) Explain the purpose of the ledger line.

/2

(b) On the staff below draw an example of a ledger line.



/1

2 In the space below draw out the Great Staff.

You must include the following:

- (i) the 3 clefs and middle C
- (ii) the pitch of the bass and tenor drones / drums
- (iii) the bagpipe scale

/12

3 Using the time signatures provided, write out 4 bars of a monotone rhythm.

Remember that no two bars should have the same note groupings, even if written in a different order within the bar.

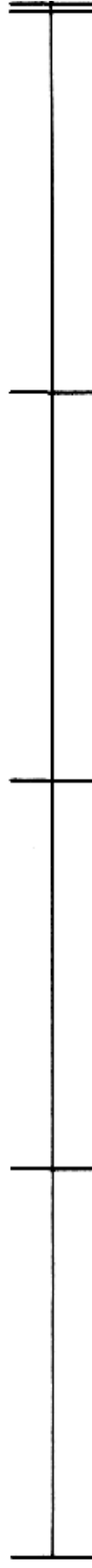
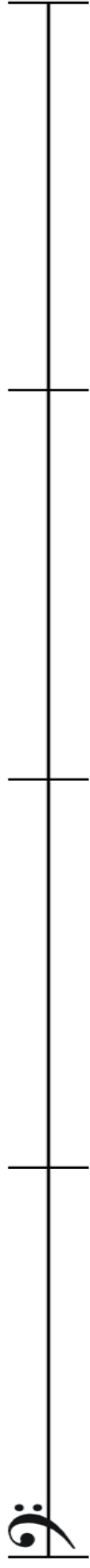


/16

4 On the staff below, write out the first 8 bars of a 6/8 quick march from memory.

Remember to include the tune name, time signature and correct musical notation including all embellishments and repeats where necessary.

Name of tune _____

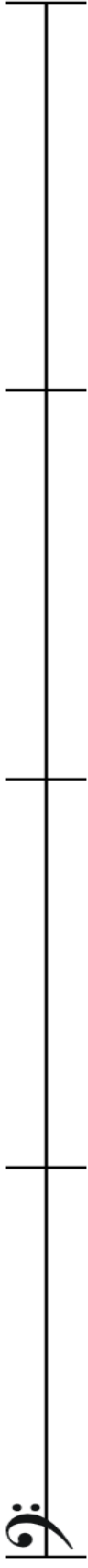


/16

5 (a) On the staff below, write out the first 4 bars of a Reel from memory .

Remember to include the tune name, time signature and correct musical notation including all embellishments and repeats where necessary.

Name of tune _____



/8

(b) Underneath the first bar write the pulse pattern.

/2

