

PIPING & DRUMMING QUALIFICATIONS BOARD

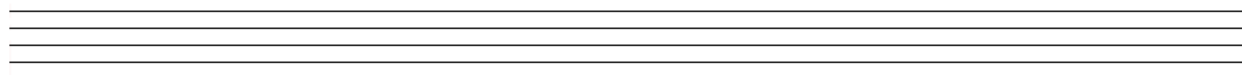
BAGPIPES - SCQF LEVEL 3

Time Allowed – 1 Hour

Music notation:-

1 a. Why is the Treble Clef also known as the G Clef.

1 b. Correctly draw a Treble Clef and place it accurately on the staff below.



/3 Marks

2. Give an example of 2 Simple Time Signatures and explain their meaning.

/5 Marks

3.a) Draw a table of relative note values starting from the Semi-breve and identify the Duration Name and Relationship to the Semi-breve ((whole note (1)) to the Demi-Semi-Quaver ((Thirty-second Note (or 1/32)). Your drawing should show **all** relative notes for each duration name.

b) How many Quavers are there in the whole note?

c) How many Demi-Semi Quavers in a $\frac{1}{4}$ Note?

/20 Marks

4. Identify the time signatures of the following pieces of music by writing that time signature on the correct place on the staff below. :



/2 Marks

5. Place bar-lines in the appropriate place according to the time signature of the piece.

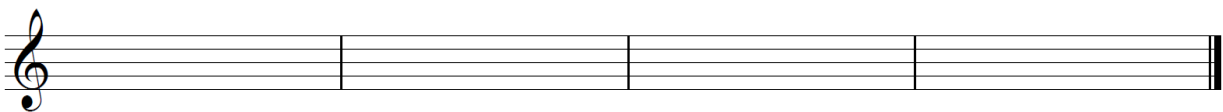
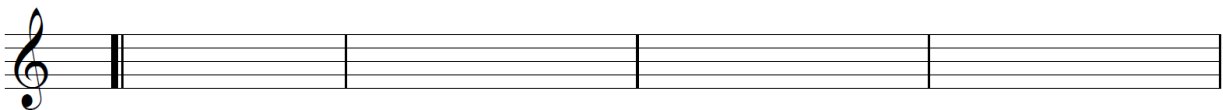


/4 Marks

Writing music in Simple Time:-

6. On the staff below write out the first 8 bars of a simple time tune from memory that you played (will play) in your Solo Performance. Include the tune name, style, Time Signature and correct notation including repeats where necessary:

Name/Style of Tune _____

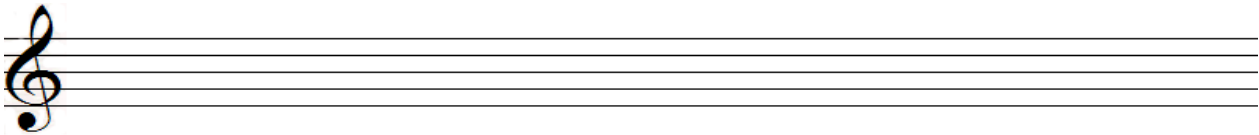


/18 Marks

Understanding of Bagpipe Movements:-

7. On the stave below, write the following movements:

- (i) a tachum from C to B (ii) a tachum from C to Low A
(iii) a grip from D to Low A (iv) a grip from D to E



/8 Marks

If you are now ready to hand-in your paper, our advice is to take time (if still available) to carefully check your answers before handing in your paper. Please check that you have read the questions correctly and answered appropriately.

Practice Chanter maintenance:- (an oral examination conducted with practical activity).

8. Oral Maintenance activity – See attached marking sheet:-

/20 Marks

TOTAL /80