

PIPING & DRUMMING QUALIFICATIONS BOARD

BASS & TENOR DRUM LEVEL 3

Time Allowed — 1 Hour

1 (a) Why is the Bass Clef also known as the F Clef?

/1

(b) Correctly draw a staff in the space below to include:

(i) bass clef

(ii) 4 equal bars (in width)

(iii) the correct use of a repeat sign.

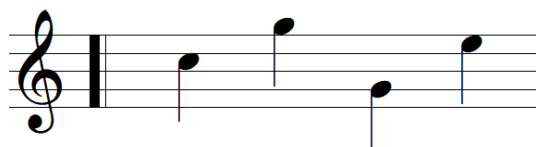
/4

2 (a) Give an example of a simple time, time signature and explain it's meaning.

/3

(b) Name the Pitch of the notes written on the staff below.

Write the letter (pitch) in the box below each note.




<input type="text"/>	<input type="text"/>	<input type="text"/>	<input type="text"/>
----------------------	----------------------	----------------------	----------------------

/2

3 (a) Complete the note value table below showing the relative note values.

The first one has been done for you.

Note	Note Name	Note Value
	Semibreve	Whole Note (or) 1

/5

(b) How many quavers ($1/8$ note) are there in the whole note?

/1

(c) How many semi-quavers ($1/16$ note) are there in a $1/2$ note?

/1

4 Look at the two notes given below.



When a tail is added to a note, what effect does it have on the duration of the note?

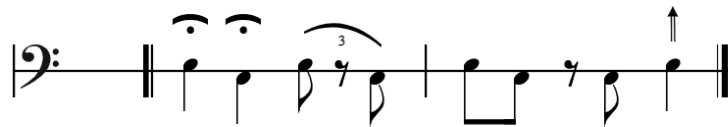
/2

5 (a) On the following bars of music write on the correct time signature for each.

(i)



(ii)



/2

(b) On the following section of music correctly place the bar lines according to the time signature given.

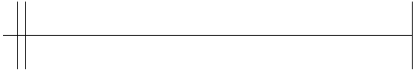


/4

6 Write the named movements on the staves provided.

(Any visual movement must be from the PDQB visual legend).

(i) Crotchet rest with single flourish



(ii) Minim rest with inside stall (both hands)



(iii) Paradiddle starting on the right hand



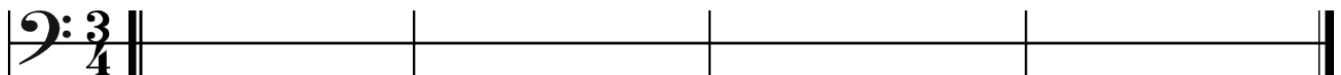
(iv) Triplet starting on the left hand



/8

7 On the staff below, write a monotone rhythm according to the time signature shown.

Each bar must demonstrate different notes or note groups.

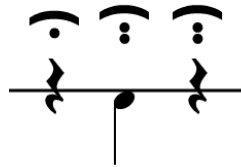


/8

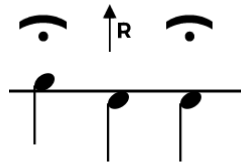
8 Look at the following staves.

Using the PDQB visual legend, circle the correct written notation for each movement that is stated.

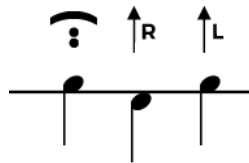
(i) Crotchet rest with double flourish/mesh



(ii) Left hand tap with single flourish



(iii) Right hand tap with a left inside stall



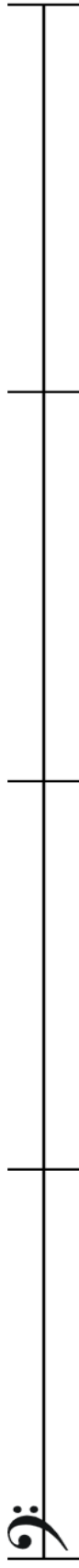
/3

9 On the staff below write out the first 8 bars of a simple time tune from memory that you played (will play) in your solo performance.

Remember to include the tune name, style, time signature and correct musical notation including repeats where necessary.

Name of tune _____

Style of tune _____



/16

TOTAL /60